



PRODUCT CATALOG

THE STRONGEST NAME IN POOLS

FOR OVER 65 YEARS

Since 1957, Fox Pool has been the strongest name in pools: manufacturing, installing, and maintaining the safest & highest quality pool products. A household name known by many, Fox Pool is an established brand in North America, known for the manufacturing of swimming pool steel walls and vinyl liners. With Corporate locations in York, PA and Burlington, ON Canada, our network continues to expand, providing more families and communities with the opportunity to build their dream pools.

We uphold a family-focused mentality within our operations to bring the safest, most functional and unique products to enhance any outdoor living space. The Fox Pool product wheelhouse includes: FoxGard- epoxy coated steel walls, Fox X-Brace concrete support system, custom steel entryways and thermoplastic steps, vinyl liners in a variety of inground patterns, the Ultimate Pool, Luxury Spas, additional upgrades and accessories, and more. As experts in the field with tradition and years of professional experience at our foundation, we are committed to providing the best building experience for you. Our goal is to create a backyard paradise to be enjoyed by the whole family, and that is why today and for years to come we will continue to *manufacture fun*.



3490 BOARD RD
YORK, PA 17406
p: 800.723.1011



5430 HARVESTER RD
BURLINGTON ONT. CANADA
p: 1.905.333.1654

WWW.FOXPOOL.COM

INDEX

04

BUILDING
PROCESS



06

INGROUND POOL
EXPERIENCE



08

FEATURED POOL



10

X-BRACE



11

FOXGARD



STEEL & THERMOPLASTIC STEPS	12
FOX POOL GALLERIES	14, 20, 30
WHY VINYL	16
LUXURY SPAS	18
COVERS AND UMBRELLAS	22
DECK JETS/LIGHTING & FUN ADD-ONS	24
ECO-FRIENDLY POOL SOLUTIONS & CHEMICALS	26
SAFETY	28

FOX POOL BUILDING PROCESS

Your design has been finalized, your location is set and ready to go, and financing is in order... now what?

It's time to start digging and building your dream pool!

1

EXCAVATION

Excavation begins 3 ft deep based on dig drawings outside the wall to facilitate wall assembly, X-Braces™, plumbing, and the concrete footer.



BUILDING A FOUNDATION BUILD FOR AN OASIS.

We transition your landscape from 'plain' to 'paradise' over a series of weeks. As with all construction, it may not be the most appealing process, but the beautiful new pool/spa system that will be the end result is sure to make a few weeks of digging, 100% worth it. **Check out our organized building process to see how we can change your yard right in front of your eyes!**

3

BACKFILL

Backfilling can be poured if desired, but is not necessary as the X-Braces™ are designed to support the pool walls independently, even when filled with water. In most cases, your Fox dealer will backfill your pool walls and pour the deck, prior to finishing the bottom and installing the liner.

2

WALL ASSEMBLY

The pool walls are assembled on the perimeter. The X-Braces™ are attached every 4ft, plumbing roughed in, and the footer is poured. At this time Fox Stairs, Buddy Seats®, Swim-Outs, and all integral parts of your Fox pool wall system are added.





5

FINISHING THE BOTTOM

A mixture of concrete, sand, and vermiculite is applied 1.5 to 2 inches thick and troweled smoothed by hand.



6

4

CONCRETE DECKING

Steel reinforcing rods are added throughout the perimeter of the pool attached to the X-Braces™ to form the foundation for your pool deck. Concrete is poured into forms and finished to your specifications.



ENJOY YOUR NEW POOL!

Once water has been delivered and your pool is full, your Dealer will test all of the components, add sanitizers as necessary, and review their operations with you.

7





THE FOX INGROUND POOL EXPERIENCE

Your backyard paradise dreams are only limited to your imagination. Fox Pool can create almost any custom pool to suit the needs of your landscape and lifestyle. We understand an inground pool is a serious investment, and that's why we take pride in providing the highest quality products manufactured by our own Fox Pool team, coupled with superior customer service for a seamless and transparent process from beginning to end. Standard and Custom pool shapes are brought to life with durable and dependable materials to last the lifetime of your pool.

Add aesthetic and a sense of character to your pool with vinyl liners, custom benches and stairs, upgraded add-ons like basketball games, LED lighting, water jets, luxury spa systems, and more. Whether you're looking for the ideal staycation spot to host family and friends, a backyard escape to enjoy the long summer days, or a functional space to maximize exercise and fun, a Fox pool is guaranteed to provide the experience you're looking for.

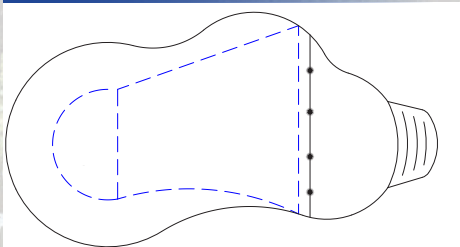
STANDARD POOL SHAPES

Fox's wide variety of standard pool styles can help you select the right look and fit for your environment. The graceful lines and elegant designs will complement and enhance the architecture of your home. Additional customizable shapes are available and can be viewed on our website or discussed with a Fox Pool Dealer.

LAGOON

STANDARD SIZES:

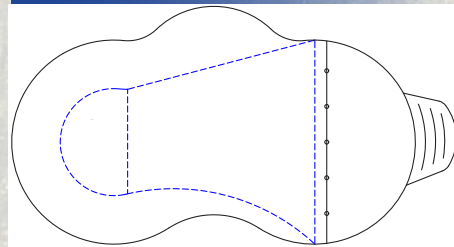
18 X 29
20 X 34
22 X 36
22 X 40
27 X 40



BAYSIDE

STANDARD SIZES:

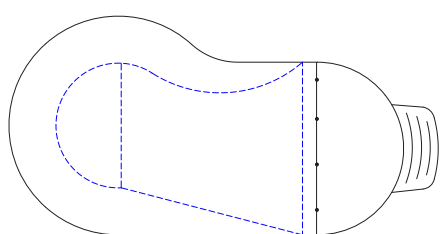
20 X 34
22 X 36
27 X 40



KIDNEY

STANDARD SIZES:

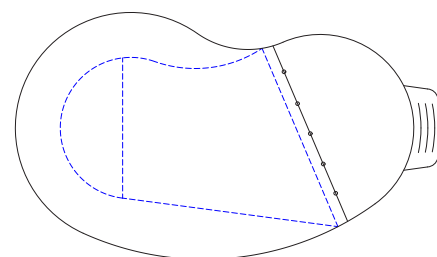
19 X 34
22 X 37
25 X 42



STANDARD SIZE:

22 X 36

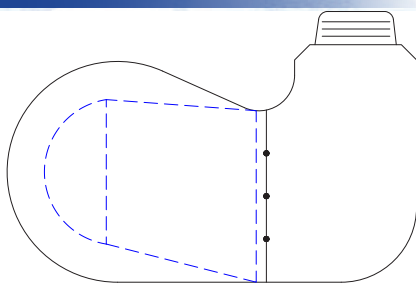
CRESCENT



NIAGARA

STANDARD SIZE:

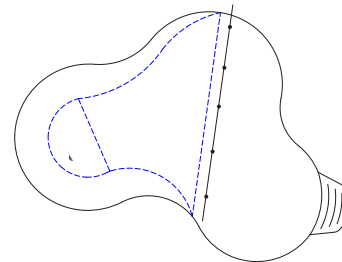
23 X 40



STANDARD SIZES:

32 X 34
32 X 36
36 X 40

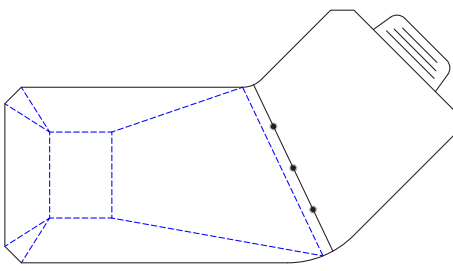
LAKEFRONT



LAZY L

STANDARD SIZE:

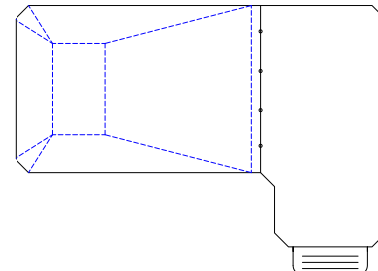
24 X 42



STANDARD SIZE:

26 X 40

90 L







X-BRACE™

FOX X-BRACE CONSTRUCTION SYSTEM PROVIDES A POOL THAT IS SELF-SUPPORTING, WITH OR WITHOUT WATER.

Fox pools utilize some of the same technology used in building bridges, tall buildings, water towers and other structures that require durability & strength against high stress.

Your swimming pool holds thousands of gallons of water while holding back thousands of pounds of earth. In order to ensure structural integrity over many years, it is important that your pool walls will remain intact, regardless of the external forces. With the Fox X-Brace™ technology, you get just that. Patented by Fox, the X-Brace™ structure provides 100% support for your pool walls and pool deck without concern for internal and external pressures. Don't be fooled by imitations – Demand the “original” X-Brace™ only available from Fox Pool.

Patented by Fox and perfected over the years, the Time Tested Engineering principle has been authenticated in an exclusive Engineering Report, prepared by an independent engineering firm, proving the Fox X-Brace™ structural integrity is as we claim. For more information, speak with a Fox Dealer for a copy of the report.

X-BRACE DETAILS

- Pool panels are supported every 2 feet by welded-on Z Bar stiffeners.
- The X-Braces™ are bolted to panels using heavy duty corrosion resistant bolts.
- Steel rods and “S” hooks anchor the X-Braces™ and the pool wall to the ground.
- A concrete footer or foundation is poured around the perimeter of the pool, creating a permanent “foundation.”
- Pool can be backfilled with or without water.
- Reinforcing rod is added to connect the top of the X-Braces™ to the deck structure.
- The concrete deck encapsulates the X-Braces™ and reinforcing rod to form a unitary structure.
- Backfill settles over time, forming a thermal barrier between the deck and the ground to protect against frost upheaval.

1. FOXITE Coping
2. Vinyl Liner
3. Wall Panel FOXGARD Protected
4. 3/8" Steel Rods

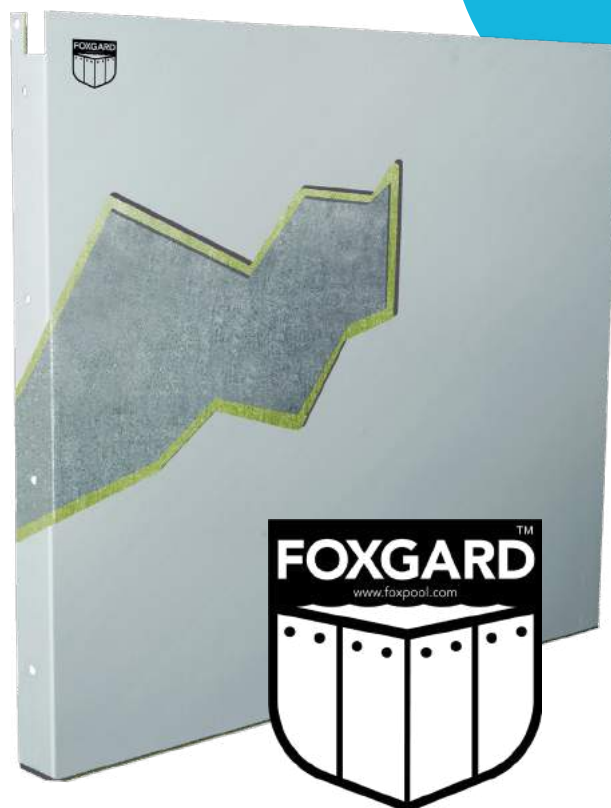
5. Concrete
6. Settled Backfill
7. Steel X-BRACE
8. Thermal Barrier
9. Walkway

GIVE YOUR POOL A LIFETIME PROTECTION WITH THE EXCLUSIVE FOXGARD® FUSION-BONDED SYSTEM.

For superior strength, Fox takes an extra step when it comes to manufacturing pools. Each piece of 14-gauge pre-galvanized steel is completely encapsulated, front and back, with a special powder coating. This coating is fusion-bonded to the steel at 400 degrees to seal it and lock out rust and corrosion.

BENEFITS

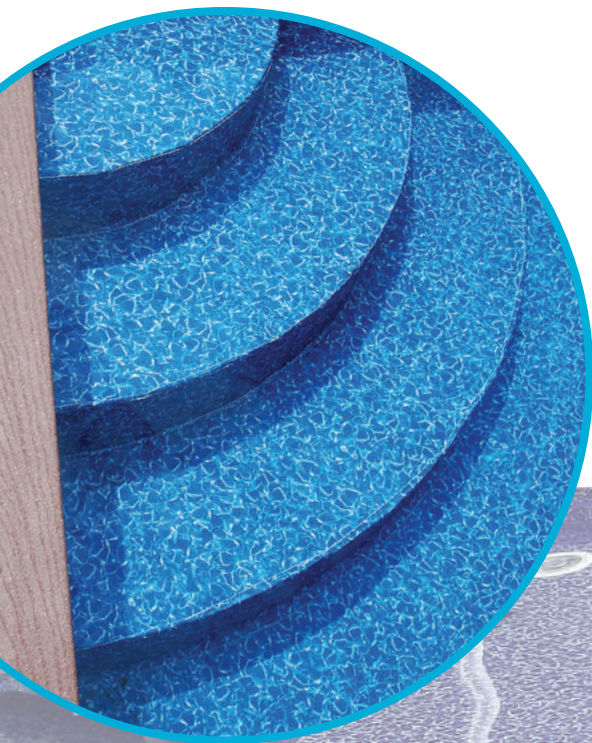
- Complete rust-resistant coverage over welds, corners, and edges
- Fusion-bonding pre-galvanized steel ensures a strong union for lasting protection
- State-of-the-art electrostatic application prevents drips, sags, or other surface imperfections
- Chip and crack resistant surfaces
- Endures ASTM B117-73 salt spray test requirements for 2,500 hours



FOXGARD®

FOX STEEL STEPS, BEACH ENTRIES, BENCHES, AND TANNING LEDGES

All items are manufactured using 14 gauge steel, and include a snap-in liner track for easy liner installation. If you can envision it, we can make it happen; we create new customized entryways, functional and relaxing tanning areas, benches, and more every day. The first time a new model is made it is assembled in our facility to guarantee that all the pieces fit perfectly. This assures easy and accurate on-site installation, every time. How you and your guests enter and relax in your pool matters; make it a truly elegant and comfortable experience with our steel offerings.



STEEL

THERMOPLASTIC



THERMOPLASTIC STEPS

Fox Pool offers thermoplastic step models as an option or addition to steel steps & benches. With a different aesthetic that can complement your design, thermoplastic in-ground steps also offer beauty, quality, and strength. Thermoplastic step features include:

- Manufactured using the thickest thermoplastic material in the industry
- Our patented face plate has smooth, rounded corners, eliminating the hazard of sharp edges to protect the liner and swimmers
- All step treads have a molded, skid-resistant surface for added safety
- Steps or twin seat/steps and specialty models are available in 4', 6', and 8' widths. Straight, radius, or cantilever options are also offered to accommodate various design elements of your pool.
- All models are available in white thermoplastic with some models available in gray.



Fox of Central, OK



Fox Pool & Spa Services



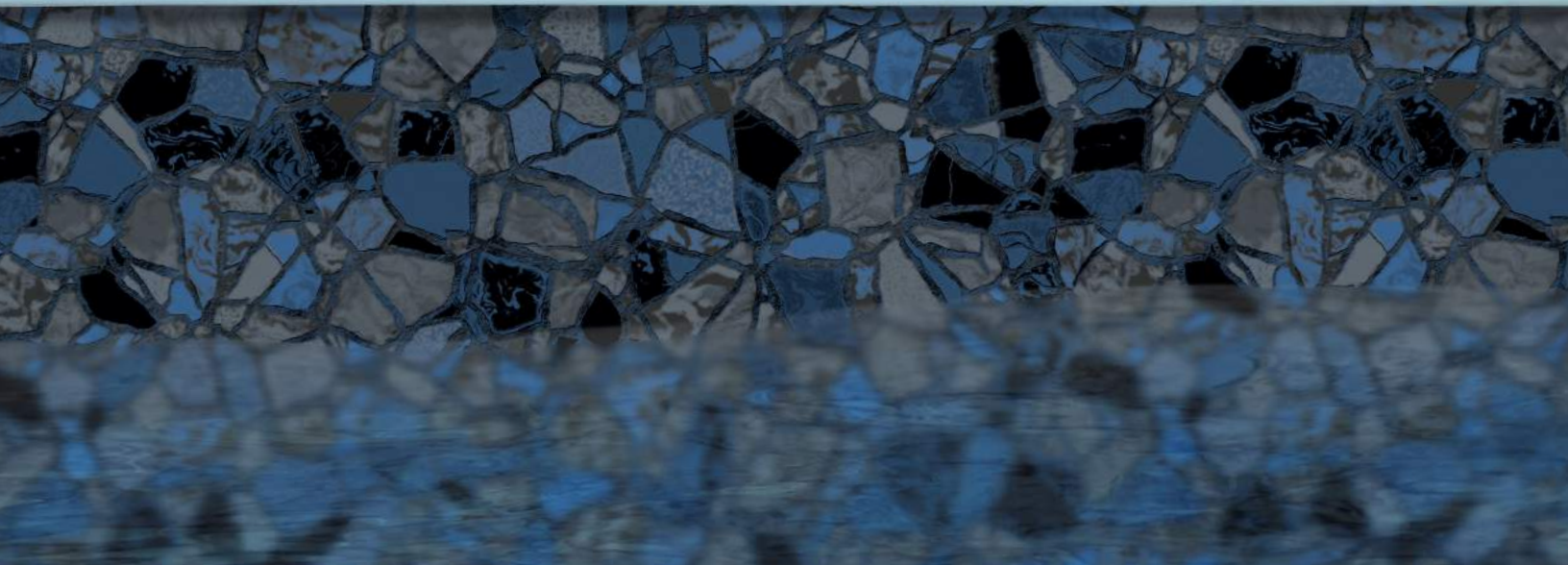
Turner's Pool and Spa



St. Lawrence Pools



Pettis Pools



Why Vinyl?

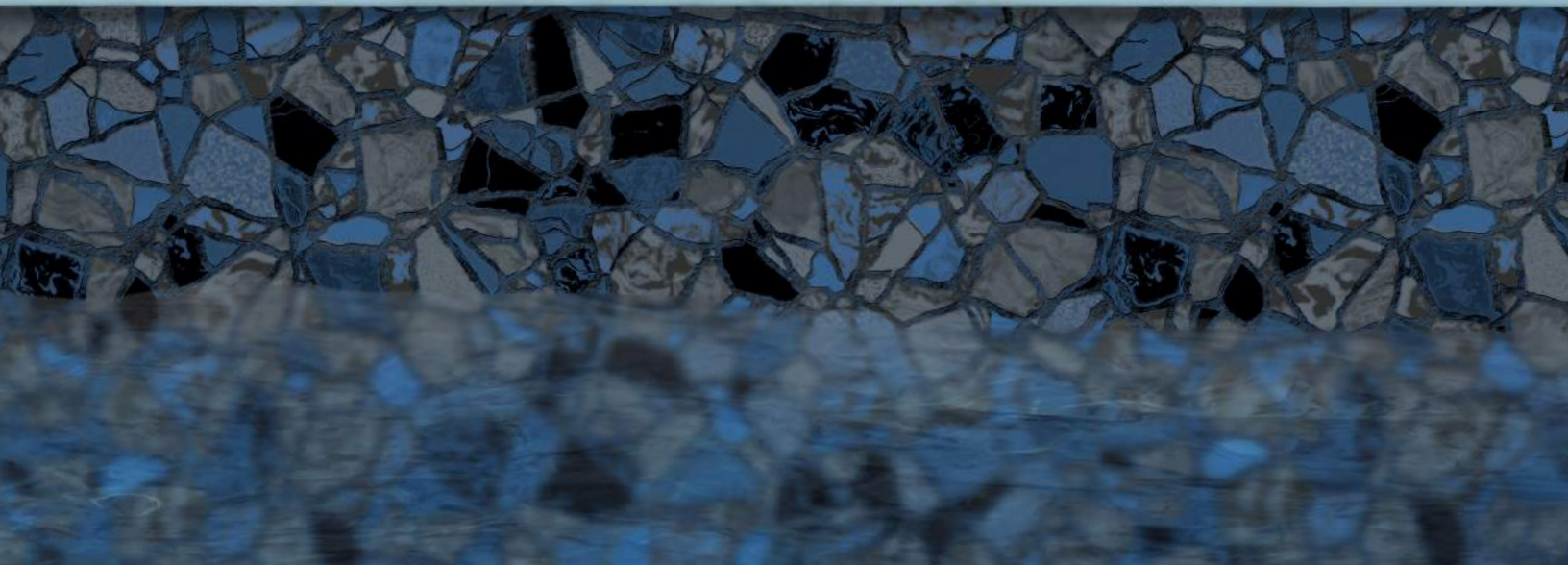
The many advantages and customization of vinyl liners make them a popular and ideal choice for inground pools. All Fox Liners are made with precision to meet the exact size specifications of your pool. We offer a variety of patterns and colors to help match the aesthetic of your surrounding landscape. Cleaning, swimming & lounging are comfortable and hassle-free as all Liners are smooth and easy to maintain, unlike the abrasive nature of concrete or tile. Each Liner has ultraviolet inhibitors and antibacterial agents to help ensure a long-lasting life, and is backed by a 25-year limited warranty.

Fox Vinyl Liners are not only for new pools, but can be custom made to fit existing inground and above ground pools as well. For a complete listing of our Vinyl Liner selections, speak with a Fox Dealer for our Brochure or Sample Set.

VINYL DETAILS

- Fox liners are made to exact specifications and are custom made to fit your pool
- Fox liners are made from 20, 28/20 or 28 mil virgin vinyl.
- Ultraviolet inhibitors and anti-bacterial agents help ensure long life.
- The look of tile with no tiles to replace or grout to clean.
- Smooth vinyl surface will not cause scratches or abrasions like concrete.
- 25 year limited warranty – see Fox Dealer for details.
- Specify gray bead for Designer Gray pools.





IN-HOUSE CRAFTSMANSHIP FOR UNDENIABLE QUALITY

A unique, meticulous process where handcrafted care meets precision machinery in unison to carefully create a perfectly custom liner for any pool. Our Vinyl Liner Shop is every bit as impressive as it sounds, using the latest technology to produce large volumes of vinyl liners every day. Once a liner is chosen and proper pool size and specifications are provided, our Team uses Automated Cutters to essentially “cut out” liner for pieces of the pool. An Air Welder or Radio Frequency Welding is then used to weld the pieces of vinyl together, creating a bond stronger than the vinyl itself.

Once a liner is in its complete form, quality inspection is performed by our highly-skilled and detail-oriented team. The liner is blown-up to mimic an inflated parachute, and inspection takes place underneath from our team by quite literally, getting on their hands and knees to inspect and feel for any holes, cuts, tears, or imperfections. Quality and care for the process lend well to seamless installation for a beautiful liner with the perfect fit for your pool, every time.



POOLMATE® & WATERFALL® LUXURY SPAS

Take your pool experience to the next level and extend relaxation further with a Poolmate® or Waterfall® Luxury Spa. Fox Pool Spas are designed and manufactured to the highest quality standards with state-of-the-art features for endless rejuvenation, and to add an extra touch of elegance to your outdoor living space. Our Spa options allow you to choose the function and movement you envision to naturally fit in with your pool and landscape.

Luxury Spas provide a comforting space to unwind all year long. With features like stainless steel jets, built-in filtration system, adjustable air control, easy-entry steps and more, your spa will not only function properly, but guarantee a truly tranquil and calming experience for any occasion.



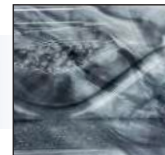
BUILT-IN FILTRATION

Fox Luxury Spas feature a built in 360-degree vortex skimmer with reusable cartridge filter.



HYDROTHERAPY

All Spas offer a special grouping of high-powered hydrotherapy jets. These fully adjustable stainless-steel jets offer the finest relaxation and revitalization experience by targeting the entire back and shoulder region.



DECORATIVE BORDER

Available in 2 sleek designs, choose from sterling silver or storm cloud with optional 12 or 25 jet systems. Each color option comes with a decorative border that adds an extra touch of elegance to each spa.

FEATURES

	PoolMate® ROUND 12 Jet	PoolMate® ROUND 25 Jet	PoolMate® SQUARE 12 Jet	PoolMate® SQUARE 25 Jet	WaterFall® ROUND 12 Jet	WaterFall® ROUND 25 Jet	WaterFall® SQUARE 12 Jet	WaterFall® SQUARE 25 Jet
EASY ENTRY STEPS	•	•	•	•	•	•	•	•
HYDROTHERAPY STAINLESS STEEL JETS	•	•	•	•	•	•	•	•
WATERFALL					•	•	•	•
COLORS	STERLING SILVER OR STORM CLOUD							
INTERIOR EMBOSSED WAVE DETAIL	•	•	•	•	•	•	•	•
ADJUSTABLE AIR CONTROL	•	•	•	•	•	•	•	•
360-DEGREE VORTEX SKIMMER	•	•	•	•	•	•	•	•
BUILT-IN FILTRATION	•	•	•	•	•	•	•	•
REUSABLE 50 SQ. FT. CARTRIDGE ACTION	•	•	•	•	•	•	•	•
DIVERTER VALVE FOR WHIRLPOOL ACTION		•		•		•		•
GALLONS OF WATER	340	340	370	370	340	340	370	370
DIMENSIONS	85" Round 34" Deep	85" Round 34" Deep	84" Square 34" Deep	84" Square 34" Deep	85" Round 34" Deep	85" Round 34" Deep	84" Square 34" Deep	84" Square 34" Deep

Fox Pool Luxury Spas are manufactured to the highest quality standards; while state-of-the-art features give you the ultimate experience in relaxation. All Spas are pre-plumbed and water tested for a minimum of 24 hours to ensure a leak-free installation.



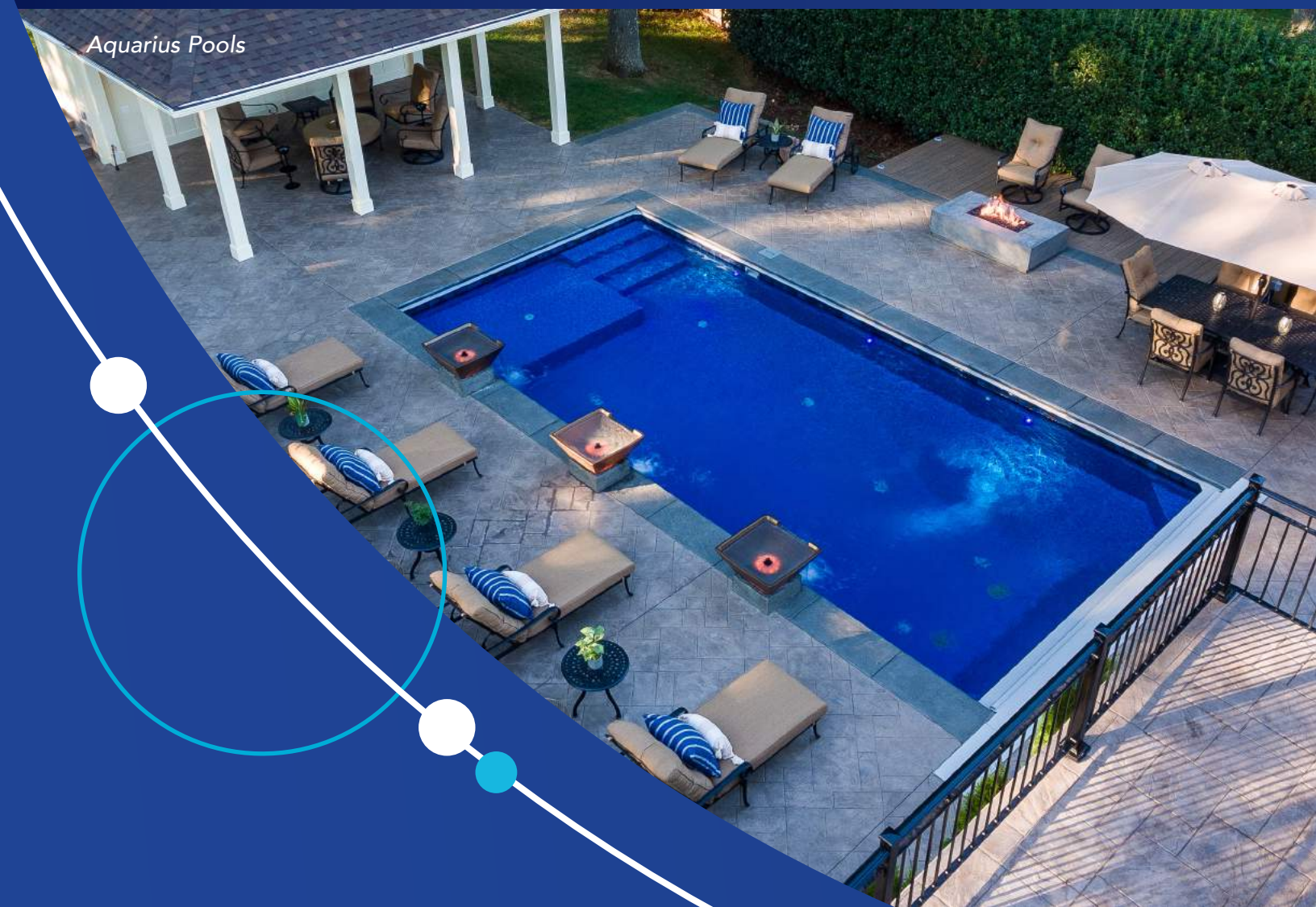
Poolmate® Spas are available in round or square shapes in Sterling Silver or Storm Cloud colors. Both are available with 12 or 25 jet systems.

Waterfall® Spas are designed to spill-over into a pool. Available in round or square shapes in Sterling Silver or Storm Cloud colors. Both are available with 12 or 25 jet systems.





Pleasure Pools



Aquarius Pools



Norrenberns Pool & Spa



Central Pool and Spa



Pettis Pools

FOX POOL COVERS

THREE•SIX•FIVE

AUTO SAFETY COVER & VINYL LINED POOL SYSTEM

First and foremost, the 365 System is SAFE, meeting the highest safety standard ASTM 1346, and supports over 450 pounds. Additionally, the Non-Skid Flush Lid protects swimmers' feet. With design in mind and durability at the core, the Ultra Strong Vinyl is integrated with high density denier core and UV Protection for color retention. The coated vinyl cover includes thermal retention and chemical resistant webbing. Both are designed and engineered to work together as a complete unit for accurate installation and years of trouble-free use.



Benefits of 365 Safety Cover:

- Up to 75% savings in heating costs
- Reduced chemical use, less cleaning
- Minimal water evaporation
- Longer lifetime of your pool equipment
- Helps prevent unwanted access to your pool
- PowerTouch® Controller secures the pool in 45 seconds
- Exclusive Gray Invis-a-Rope™ perfectly blends with coping



CLEARDECK® SYSTEMS

Conventional solar blankets are often difficult to operate, especially for one person. With the ClearDeck® Inground Solar Blanket Roller, covering and uncovering your pool is quick, easy, and hassle free. Designed for convenient one-person operation, ClearDeck®'s patented design requires minimal effort. The blanket remains hidden below deck until ready to use.

To cover your pool, simply unroll the solar blanket with the convenient pull strap. Retract by lifting the lid, inserting the handle, and turning continuously while the ClearDeck® system neatly rolls the blanket and stores it below ground. Your solar blanket can be extended or retracted in less than a minute so you can spend less time working, and more time enjoying your pool!

A solar blanket prevents heat loss from your pool, so you won't have to run your pool heater as often, drastically reducing the cost of heating while maintaining your pool at the perfect temperature. An eco-friendly, user-friendly, ideal option for any pool owner.

FOX POOL BRANDED UMBRELLA

A Fox Pool Umbrella will provide you with uninterrupted shade and relief from the summer sun. Compatible with a Fox Buddy Seat and crafted with durable materials, you can rest assured you and your family can sit safely and comfortably under a Fox Umbrella. Available in blue and white or gray and white color combinations to complement any backyard oasis.



*We've got it made
in the shade with
Fox Pool Umbrellas!*





ACCENTS & FEATURES



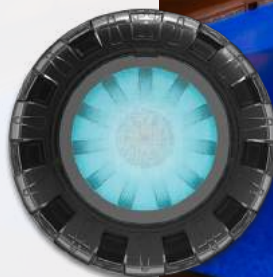
Deck Jets

Add visual movement and elegance to your pool with Fox Deck Jets. Installing Deck Jets creates a water arch style that can be enjoyed by the whole family. Aside from aesthetics, jets naturally create an additional noise barrier to the outside sounds, for a more peaceful pool experience. Deck Jets can be customized to fit desired height and angles.

Lighting

Choose from standard white lighting to colored LED lights that are bright and add overall attractive aesthetic to any pool at night. *Now available:* Spa Electrics by Fox Pool vinyl replacement light system and compatible LVX Series Transformer. The Retro R10 light offers replacement lighting that won't damage a vinyl liner, and provides energy efficiency and brightness that lasts. Whatever system you choose, you'll be sure to make the right decision with a Fox lighting system.

Fox Pool is proud to offer the ARGON 3" Vinyl Series by Spa Electrics. ARGON lights are designed to endure harsh weather conditions with strong and durable materials, providing advanced illumination and functionality. Spa Electrics ARGON light uses innovative technology to make service, maintenance, and installation simple, all while generating high-quality LED performance. ARGON lights are built for extreme temperatures, built smart with quick connect plugs and easier installation, and built powerful generating advanced optics and German engineered components to provide maximum output with an innovative forward-facing Heat Sink design.





we bring the FUN

What is a true staycation pool paradise without a little fun? At Fox, we are family-focused, and that means thoughtfully offering products for a safe and enjoyable environment for all ages. Our goal is to turn your backyard into a space to gather, catch up, and share in the memories that last a lifetime.

How do we do this? With the best in "FUN" products, that's how! Get some exercise and enjoy hours of family play time with our Fox Pool Fun Kit or Basketball Game additions! Speak with a Fox Dealer to find out what fun you can add to your dream pool!

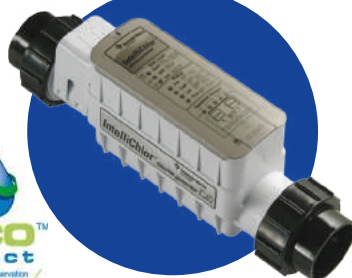


FOX SMART ECO-FRIENDLY POOL SOLUTIONS



LIGHTING

Automated color changing & white LED lights add fun and safety to night time swimming.



SALT CHLORINATOR

Converts ordinary household table salt into chlorine effectively and efficiently.



POOL CONTROLS

Allows functionality in the palm of your hand from virtually anywhere!



HEATERS & HEAT PUMPS

Heat your pool; extend your swimming season!



PUMPS

Fox's Pentair pumps are the quietest, most dependable on the market.

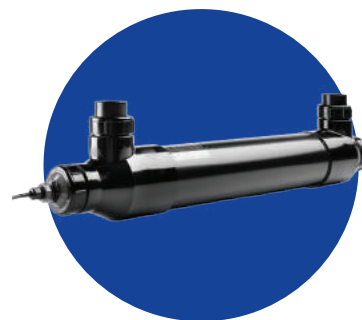


FILTERS

Maximizes water flow for clearer sparkling water.

SANITIZERS

BioShield® UV Disinfection Sanitizer is a modern approach to pool water disinfection and significantly reduces chlorine use.



CHEMICALS

Fox Pool offers its own chemical line completely sourced and stocked in our warehouse **exclusively for Fox Pool customers**. Our chemicals are the best choice for pools, as they do not have the additional fillers and added components that competitor store-bought chemicals have, making them more efficient, pure, and useful for pool water in the first use. Our chemicals create happy pools, and save **YOU** money.

(better chemicals to start, less trips to the store to 'fix' water issues!)

We carry the sought after
ESSENTIALS
that all pools need.

CHLORINATED TABLETS

PH PLUS AND MINUS

ALGAECIDE

ALKALINITY PLUS

PHOSPHATE REMOVER

TILE & VINYL CLEANER

& MORE!



ALWAYS PUT SAFETY FIRST.

We provide exact dig drawings for every pool we make, ensuring that your builder has the proper specifications for your bottom configuration, including depths and dimensions for both diving and non-diving pools. Proper construction is the foundation for safety. Please be aware that even with Type II Diving pools, it is unsafe to dive from the pool deck into any part of the pool. This applies to all residential swimming pools and is dictated by the APSP.

To help remind you of this and to make sure your guests are aware, Fox supplies NO DIVING signs with all new pools and liners. Make sure your dealer affixes these labels and no one removes or defaces them. If you choose to install a diving board on one of our diving pools, be certain that the manufacturer's size and placement instructions are followed exactly. Diving boards **MUST** be installed in accordance with the APSP safety guidelines. Failure to comply with these guidelines may result in serious injury or death.

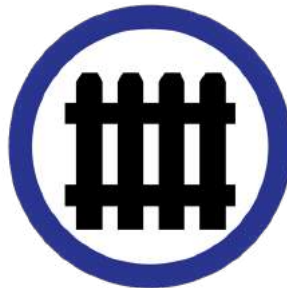


You can obtain a copy of these guidelines directly from the APSP at:
2111 Eisenhower Ave Alexandria, VA 2231 or www.theapsp.org



SUPERVISION AT ALL TIMES

Never allow children or infants in or around your pool without constant adult supervision. Never swim alone and do not swim under the influence of alcohol or certain prescription medications. Always keep a rescue ring or other rescue device by the pool for emergency assistance. Read your owners manual and the other safety information provided with your pool.



PROPER FENCE & GATE

Most local codes require some type of barrier to prevent children from accessing the pool area. Typically, an enclosure must be at least four feet high and include a self closing gate. Check with your local code inspector to find out the requirements for your area.



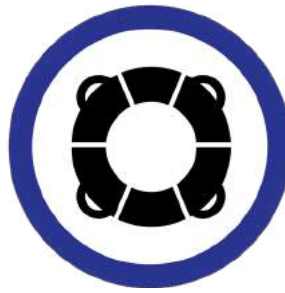
NO DIVING SIGN

In addition to 'No Diving' labels, we supply you with an area sign indicating proper pool usage. You must display this sign to alert all pool users of the proper usage of the pool.



STEPS & LADDERS

Steps or a ladder should be installed in the shallow end of your pool if the water is more than 2' deep. A ladder must be installed in the deep end.



SAFETY ROPES & FLOATS

The safety rope and floats must be installed 12" before the break on the floor in the shallow end where the slope starts. This will help identify deep water for your pool guests and provide a safer swimming experience.



LIGHTING AT NIGHT

Your builder can discuss several options for lighting your pool properly to provide safe night time swimming and enhance your backyard.



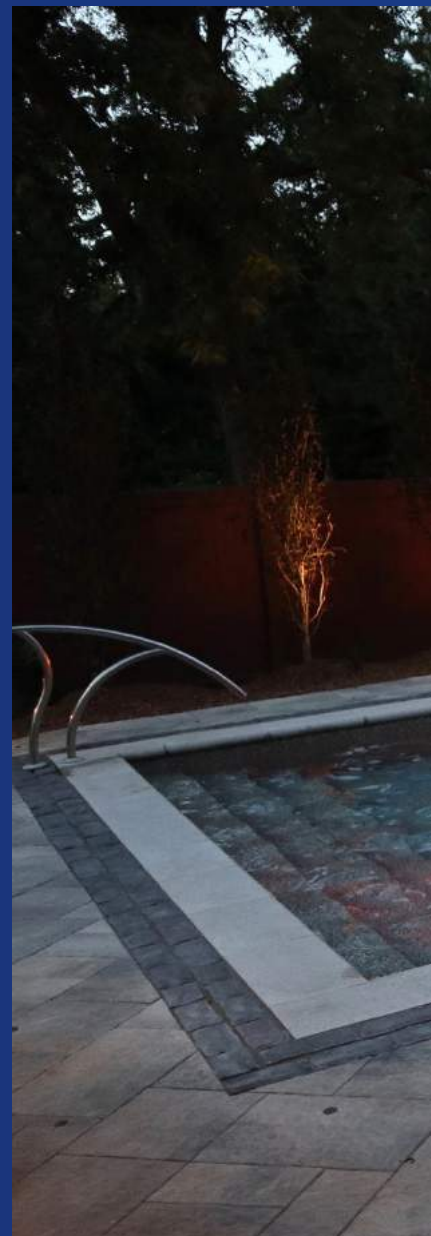
Pettis Pools



Foxx Pools by Charles Burger

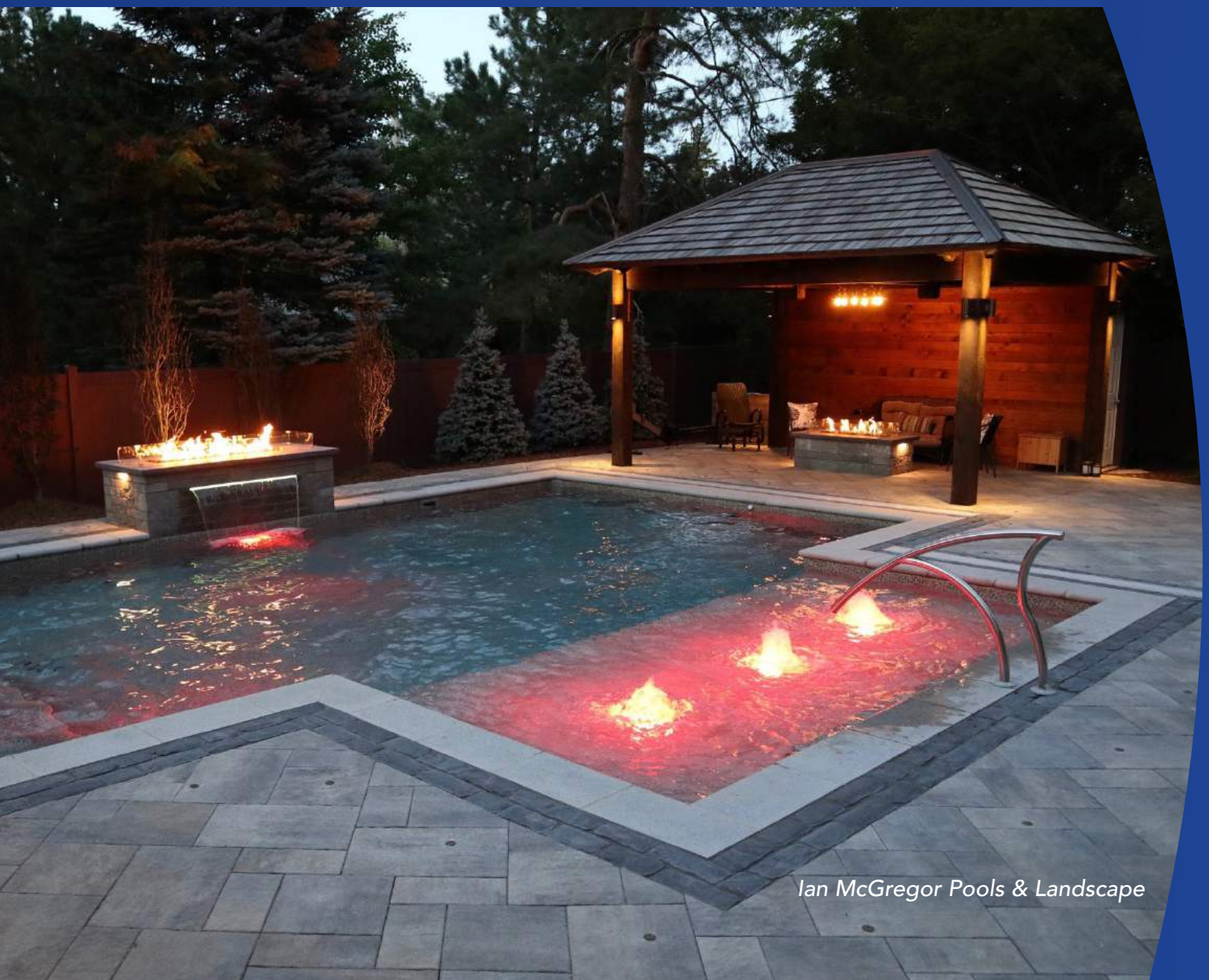


Pools West





Carolyn Pools

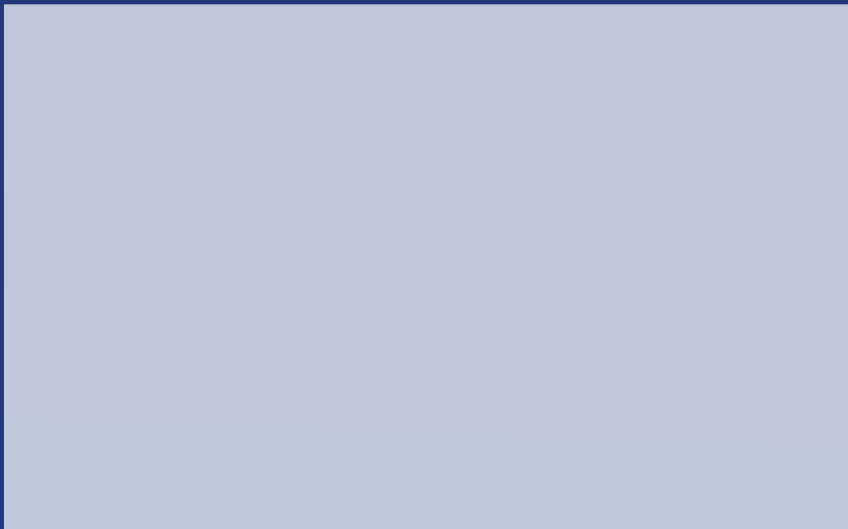


Ian McGregor Pools & Landscape



The Strongest Name in Pools.

AUTHORIZED FOX POOL DEALER



3490 BOARD RD, YORK, PA 17406
p: 800.723.1011 | f: 800.723.7677



5430 HARVESTER RD, BURLINGTON ONT. CANADA
p: 1.905.333.1654 | f: 1.905.333.3892

FOXPOOL.COM

Made in the USA • FX-PRODUCTCATALOG © 2023 Fox Pool