



PRODUCT

Catalog

Since 1957, Fox Pool has been the strongest name in pools: manufacturing, installing, and maintaining the safest & highest quality pool products.

A household name known by many, Fox Pool is an established brand in North America, known for the manufacturing and distribution of superior pool and spa products. Our network continues to expand, providing more families and communities with the opportunity to build their dream pools.

We uphold a family-focused mentality within our operations to bring the safest, most functional and unique products to enhance any outdoor living space. The Fox Pool product wheelhouse includes: ClearGard™ corrosion-resistant steel walls and steps, Fox X-Brace concrete support system, custom steel entryways and thermoplastic steps, vinyl liners in a variety of inground patterns, coping, deck drains, the Ultimate Pool, Luxury Spas and Hot Tubs, additional upgrades and accessories, and more.

As experts in the field with tradition and years of professional experience at our foundation, we are committed to providing the best building experience for you. Our goal is to create a backyard paradise to be enjoyed by the whole family with the strength and integrity to last the lifetime of your home.

THE STRONGEST



675 Arvin Avenue, Unit 2, Hamilton, ON, L8E 5R2. CANADA
905-333-1654

FOXPOOL.COM

NAME IN POOLS



THE FOX **INGROUND** **POOL** *EXPERIENCE*

Your backyard paradise dreams are only limited to your imagination. Fox Pool can create almost any custom pool to suit the needs of your landscape and lifestyle. We understand an inground pool is a serious investment, and that's why we take pride in providing the highest quality products manufactured by our own Fox Pool team, coupled with superior customer service for a seamless and transparent process from beginning to end. Standard and Custom pool shapes are brought to life with durable and dependable materials to last the lifetime of your pool.

Add aesthetic and a sense of character to your pool with unique vinyl liner patterns, custom steel benches and steps, thermoplastic steps, durable steel panels and construction products, luxurious coping options, and more. Whether you're looking for the ideal staycation spot to host family and friends, a backyard escape to enjoy the long summer days, or a functional space to maximize exercise and fun, a Fox pool is guaranteed to provide the experience you're looking for.

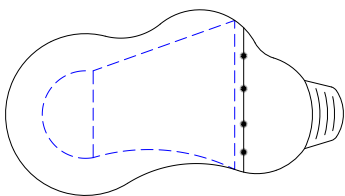
STANDARD POOL SHAPES

Fox's wide variety of standard pool styles can help you select the right look and fit for your environment. The graceful lines and elegant designs will complement and enhance the architecture of your home. Additional customizable shapes are available and can be viewed on our website or discussed with a Canadian Fox Pool Dealer.

STANDARD SIZES:

18 X 29
20 X 34
22 X 36
22 X 40
27 X 40

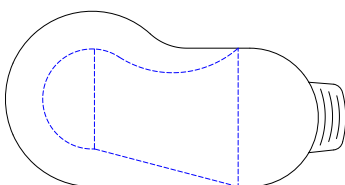
LAGOON



STANDARD SIZES:

15 X 27
17 X 29
19 X 34
22 X 37
25 X 42

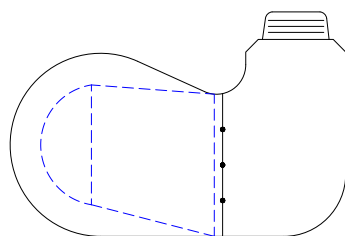
KIDNEY



STANDARD SIZES:

23 X 40

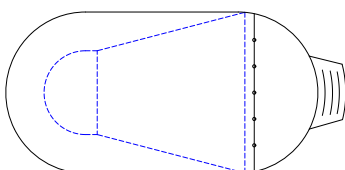
NIAGARA



STANDARD SIZES:

17 X 33
18 X 38
20 X 40

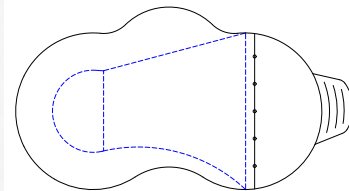
OVAL



STANDARD SIZES:

20 X 34
22 X 36
27 X 40

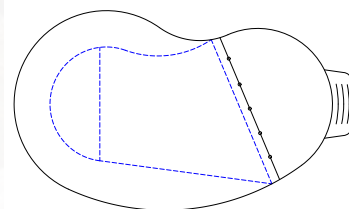
BAYSIDE



STANDARD SIZES:

22 X 36

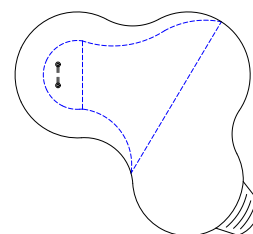
CRESCENT



STANDARD SIZES:

20 X 34
32 X 36
27 X 40

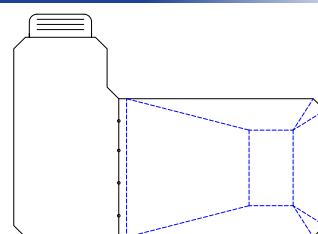
LAKEFRONT



STANDARD SIZES:

26 X 40

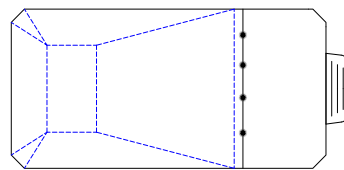
90 L



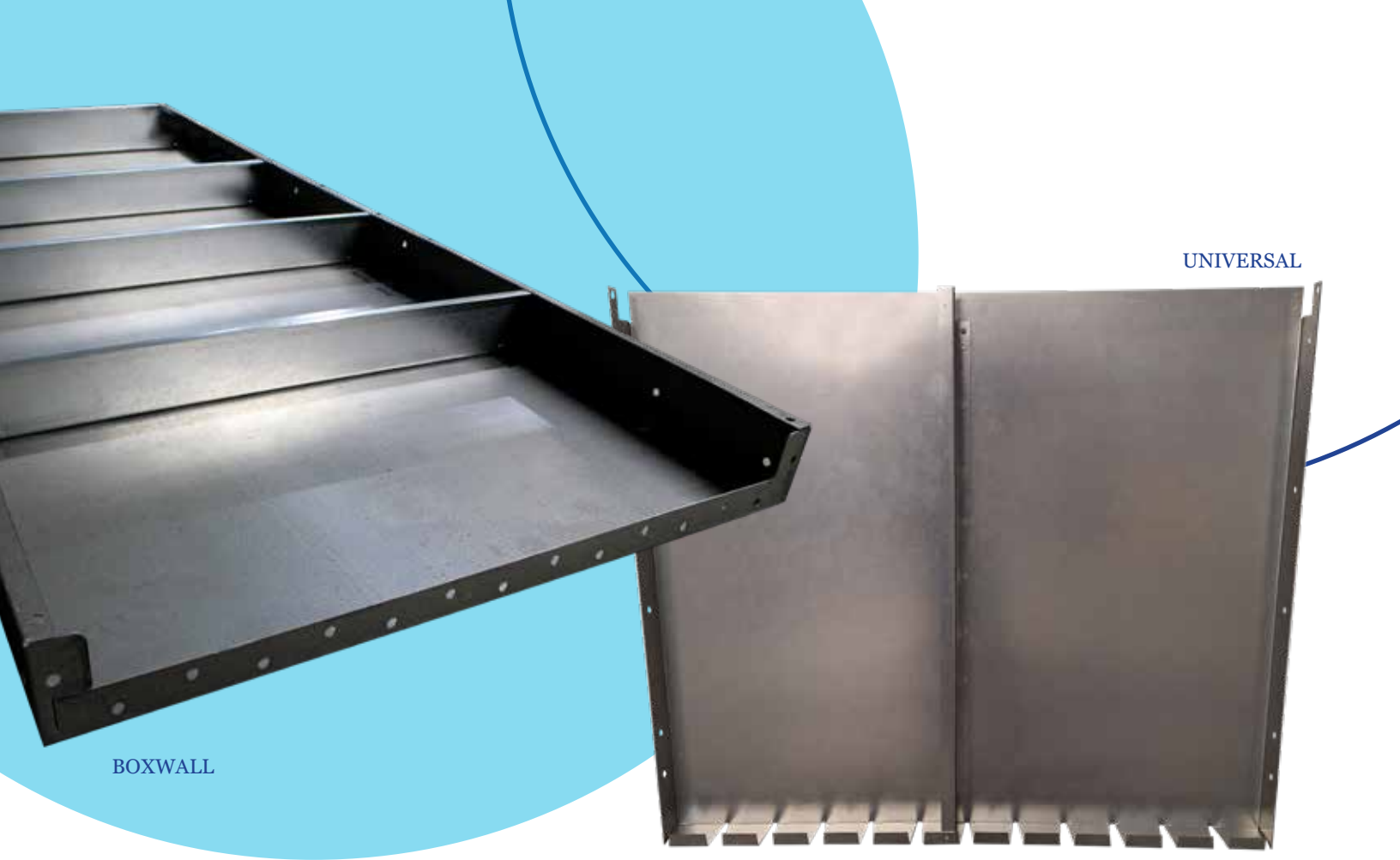
STANDARD SIZES:

16 X 32
16 X 34
18 X 36
20 X 40

RECTANGLE



6" Cut and Radius corners available.



BOXWALL

UNIVERSAL

STEEL WALLS

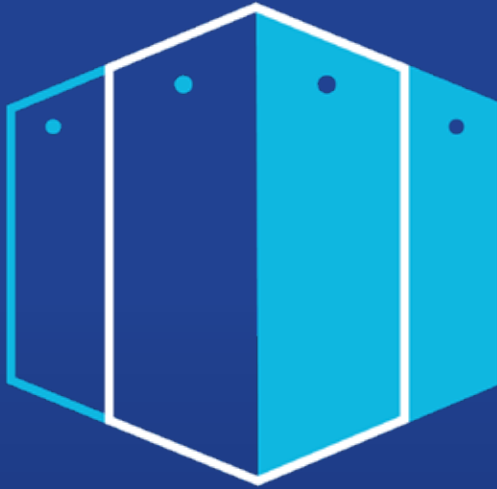
STRENGTH WHERE IT COUNTS

BOXWALL

- Coated in Cleargard™: non-corrosive steel protection
- NOW 42" TALL
- Available in 8', 6', 4', 3', 2', and 1' panels
- The best option for pools with straight walls/Rectangle pool builds

UNIVERSAL

- Coated in Cleargard™: non-corrosive steel protection
- 42" & 48" height options
- Available in 4', 3', 2', and 1' panels
- Serrated bottom flange allows for flexibility when building free form shapes
- Stiffeners attached remove a construction step for builders



CLEARGARD™

All Fox Pool steel panels and steps are manufactured with the finest North American-sourced 14-gauge steel and coated with our brand new Cleargard™ non-corrosive formula for durability that lasts the lifetime of the pool.

Our advanced design and technology work in unison to produce a structurally sound, elegant step that fits perfectly during installation, and is prepped for a smooth vinyl liner finish.

Superior Corrosion Resistance of CLEARGARD

TIME	100h	1000h	5,000h
CLEARGARD™			
55% Al-Zn alloy coated steel			
Zn-5% Al alloy coated steel			
Galvanized steel			

* Appearances of cut edge sections after salt spray test (Thickness 0.126", coating weight 0.40/0.40 oz/ft², no chem treat)

* Cleargard™ produced to ASTM A1046 specifications

Cleargard is comprised of a calculated mixture of Aluminum, Zinc, and Magnesium which forms together to provide the most effective non-corrosive and scratch resistant coating for steel parts in the industry.

Al and Mg in the coating layer combine to form a fine, tightly adhered zinc-based protective film on the steel surface as time passes. The film suppresses corrosion of the Cleargard coating, especially in Salt Generator Pools—up to 5x's more effective than standard galvanization. It also offers increased protection when servicing areas with a high water table or acidic ground conditions.



CLEARGARD CORROSION RESISTANCE

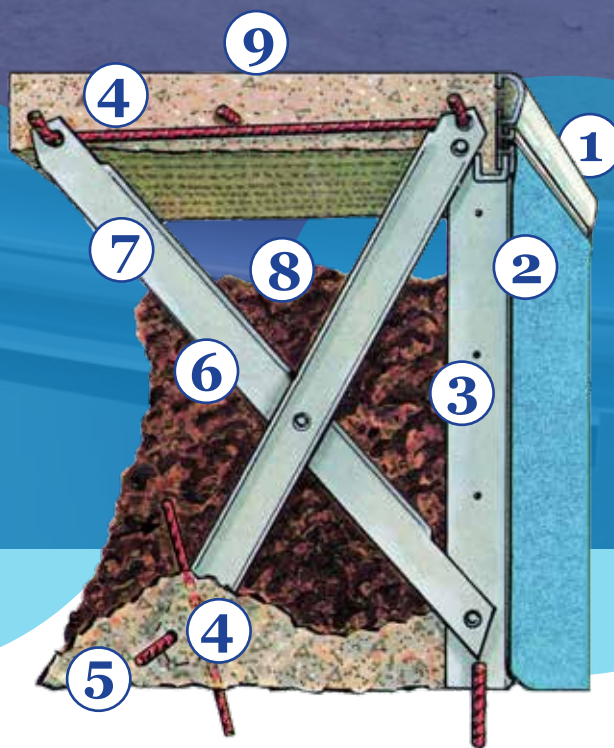


SELF-SUPPORTING SYSTEM BY FOX **X-BRACE**

Fox pools utilize some of the same technology used in building bridges, tall buildings, water towers and other structures that require durability & strength against high stress.

Your swimming pool holds thousands of gallons of water while holding back thousands of pounds of earth. In order to ensure structural integrity over many years, it is important that your pool walls will remain intact, regardless of the external forces. With the Fox X-Brace™ technology, you get just that. Patented by Fox, the X-Brace™ structure provides 100% support for your pool walls and pool deck without concern for internal and external pressures. Don't be fooled by imitations – Demand the “original” X-Brace™ only available from Fox Pool.

Patented by Fox and perfected over the years, the Time Tested Engineering principle has been authenticated in an exclusive Engineering Report, prepared by an independent engineering firm, proving the Fox X-Brace™ structural integrity is as we claim. For more information, speak with a Fox Dealer for a copy of the report.



1. FOXITE Coping

2. Vinyl Liner

3. Wall Panel FOXGARD Protected

4. 3/8" Steel Rods

5. Concrete

6. Settled Backfill

7. Steel X-BRACE

8. Thermal Barrier

9. Walkway

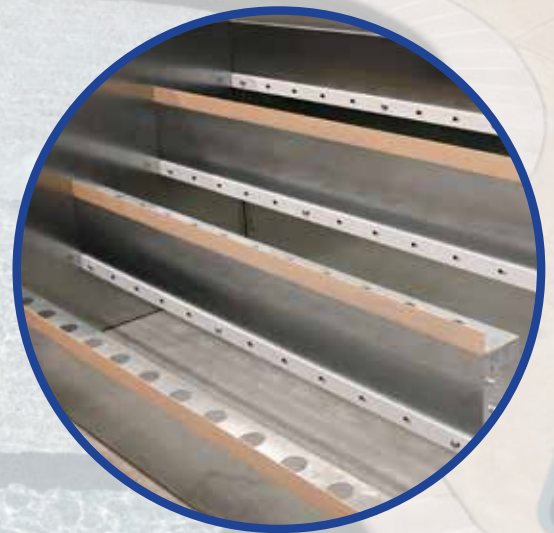
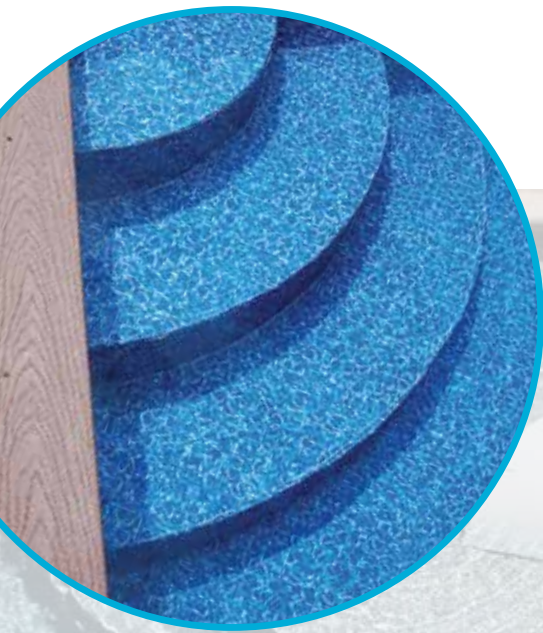
- Pool panels are supported every 2 feet by welded-on Z Bar stiffeners.
- The X-Braces™ are bolted to panels using heavy duty corrosion resistant bolts.
- Steel rods and “S” hooks anchor the X-Braces™ and the pool wall to the ground.
- A concrete footer or foundation is poured around the perimeter of the pool, creating a permanent “foundation.”
- Pool can be backfilled with or without water.
- Reinforcing rod is added to connect the top of the X-Braces™ to the deck structure.
- The concrete deck encapsulates the X-Braces™ and reinforcing rod to form a unitary structure.
- Backfill settles over time, forming a thermal barrier between the deck and the ground to protect against frost upheaval.

FOX STEEL STEPS, BEACH ENTRIES, BENCHES, & TANNING LEDGES

Fox Pool's steel steps, benches, and entryways create an attractive and durable foundation for any dream pool.

Fox Pool stands ready with the most advanced manufacturing technology, design software, and handcrafted precision to ensure an accurately finished product, every time. All items are manufactured with 14-gauge steel or Cleargard® corrosion-resistant steel, and include aluminum liner track for easy liner installation. Every new model is thoughtfully designed to ensure a “perfect-fit” when installed on-site, every time. Fox offers solid, open-pour, the modular step system, drop-in step options for any pool design.

Quite simply, Fox steel steps and entryways are unmatched for performance, function, and elegance.



STEEL

THERMOPLASTIC

A large swimming pool with a wooden fence and a circular inset showing a close-up of a thermoplastic step.

THERMOPLASTIC STEPS

Fox Pool offers thermoplastic step models as an option or addition to steel steps & benches. With a different aesthetic that can complement your design, thermoplastic in-ground steps also offer beauty, quality, and strength. Thermoplastic step features include:

- Manufactured using the thickest thermoplastic material in the industry
- Our patented face plate has smooth, rounded corners, eliminating the hazard of sharp edges to protect the liner and swimmers.
- All step treads have a molded, skid-resistant surface for added safety
- Steps or twin seat/steps and specialty models are available in 4', 6', and 8' widths. Straight, radius, or cantilever options are also offered to accommodate various design elements of your pool.
- All models are available in white thermoplastic with Cantilever models also available in gray. THERMOPLASTIC function, and elegance.
- Select stair models come in Bullnose or Foxite II coping



WHY VINYL?

The many advantages and customization of vinyl liners make them a popular and ideal choice for inground pools. All liners offered by Fox Pool Canada are made with precision to meet the exact size specifications of your inground or above ground pool. A variety of patterns and colors help match the aesthetic of your surrounding landscape.* Cleaning, swimming, and lounging are comfortable and hassle-free as all liners are smooth and easy to maintain, unlike the abrasive nature of concrete or tile. Customization is key, and we will ensure that your vinyl is made to lay taut against every angle and curve of your pool's design for an elegant finish over all steel structures.

There are patterns available to suit every personal taste and budget. Speak with a Fox Pool Dealer for more information on our current vinyl offerings.

**Please note, pattern availability is subject to change any time, and may change annually. Speak with your Dealer to the most updated inventory selection.*

IN PARTNERSHIP WITH



COPING

PC & HZ



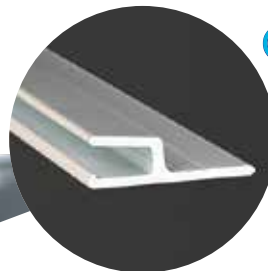
PC COPING

PC Aluminum Bullnose Coping is available for Fox Boxwall panels in gray or white. PC coping is flange mounted and attaches to the top of any Fox Boxwall panel for use with poured concrete decks.



HZ COPING *NEW LOOK!*

HZ Aluminum Coping is available for Fox Boxwall panels in gray or white. HZ coping is flange mounted and attaches to the top of any Fox Boxwall panel for use with paver decks or poured concrete cantilever decks.



Old & New
HZ Liner Tracks
**CAN BE USED
TOGETHER!**

Our **NEW HZ LINER TRACK** is **now available** with a catch lip. This lip catches the top of the panel to allow for easy alignment with the top of the wall for a faster and more accurate installation.

FOXITE II & CANTILEVER

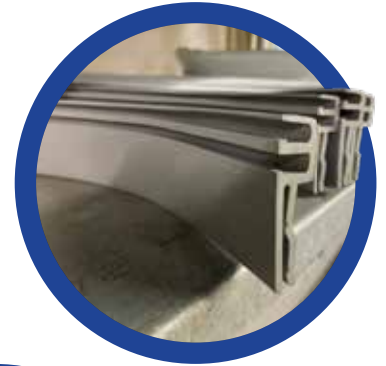
WHITE FOXITE II
RADIUS



GRAY CANTILEVER



GRAY CANTILEVER
RADIUS



GRAY FOXITE II



GRAY FOXITE II
RADIUS



WHITE CANTILEVER RADIUS

FOXITE II

Fox manufactures Foxite II Coping for excellence in beauty and durability. This coping is used on all Fox 1981- Current pools: Freeforms, Rectangular, and all Garden Pools. It incorporates the exclusive Fox double track design.

CANTILEVER

PVC coping designed for use with Fox Pools with poured concrete Cantilever decks.



COPING



FOX POOL

Luxury

SPAS

ESCAPE AWAY TO YOUR BACKYARD

for a truly relaxing experience in a Fox Pool Luxury Spa. Made with precision and the highest quality product coupled with state of-the-art features, a spa addition can provide endless rejuvenation all year long. Our Standard and Spill-Over options allow you to choose the function and movement of your outdoor living space. Available in two sleek color variations, a Fox Spa is simply an extension of elegance to any pool.

Poolmate Spa- Round 12
or 25 Jet, Sterling Silver

Waterfall Spa- Round 12
or 25 Jet, Sterling Silver

Poolmate Spa- Square 12
or 25 Jet, Storm Cloud

Waterfall Spa- Square 12
or 25 Jet, Storm Cloud



Fox Pool Luxury Spas are manufactured to the highest quality standards, while state-of-the-art features give you the ultimate experience in relaxation. All Spas are pre-plumbed and water tested to ensure a leak-free installation.

	ROUND 12 JET	ROUND 25 JET	SQUARE 12 JET	SQUARE 25 JET
Easy Entry Steps	•	•	•	•
Hydrotherapy Stainless Steel Jets	•	•	•	•
Colors	STERLING SILVER OR STORM CLOUD			
Interior Embossed Wave Detail	•	•	•	•
Adjustable Air Control	•	•	•	•
360-Degree Vortex Skimmer	•	•	•	•
Built-in Filtration	•	•	•	•
Reusable 50 sq.ft. Cartridge Filter	•	•	•	•
Diverter Valve for Whirlpool Action		•		
Dimensions	85" Round 34" Deep	85" Round 34" Deep	84" Square 34" Deep	84" Square 34" Deep

365 AUTO-COVERS

365 Auto Safety Cover & Vinyl Lined Pool System

First and foremost, the 365 System is SAFE, meeting the highest safety standard ASTM 1346, and supports over 450 pounds.

Additionally, the Non-Skid Flush Lid protects swimmers' feet. With design in mind and durability at the core, the Ultra Strong Vinyl is integrated with high density denier core and UV protection for color retention.

The coated vinyl cover includes thermal retention and chemical resistant webbing. Both are designed and engineered to work together as a complete unit for accurate installation and years of trouble-free use.

BENEFITS

- Up to 75% savings in heating costs
- Reduced chemical use, less cleaning
- Minimal water evaporation
- Longer lifetime of your pool equipment
- Helps prevent unwanted access to your pool
- PowerTouch® Controller secures the pool in 45 seconds
- Exclusive Gray Invis-aRope™ perfectly blends with the coping







Erie Accent



St. Lawrence



Ian McGregor



St. Lawrence



Central Pool and Spa



Pleasure Pools



Mitch the Pool Guy



Thornbury







The Strongest Name in Pools.

AUTHORIZED FOX POOL CANADA DEALER



675 Arvin Avenue, Unit 2, Hamilton, ON, L8E 5R2. CANADA

FOXPOOL.COM

FX-ULTCANADA © 2026

Produced by Fox Pool - Division of Cardinal Systems, Inc.