

# INGROUND POOL

## EXPERIENCE

# INGROUND POOL

Fox Pool can create almost any custom pool to suit the needs of your landscape and lifestyle. We understand an inground pool is a serious investment, and that's why we take pride in providing the highest quality products, coupled with superior customer service for a seamless process from beginning to end. Whether you're looking for the ideal staycation spot to host family and friends, a backyard escape to enjoy the long summer days, or a functional space to maximize exercise and fun, our inground pools are guaranteed to provide the experience you're looking for.

We transition your landscape from 'plain' to 'paradise' over a series of weeks. As with all construction, it may not be the most appealing process, but the beautiful new pool/spa system that will be the end result is sure to make a few weeks of digging, 100% worth it. ***Check out our organized building process to see how we can change your yard right in front of your eyes!***

## OUR PROCESS:

1

### CONSTRUCTION MEETING

Once your land has been surveyed, financing secured, and permits obtained, one of our Representatives will meet with you with a pre-dig layout, and go over construction timeline and expectations. Your Representative will visit the site periodically to track progress.

2

### EXCAVATION

The pool is excavated according to the dig drawings. A 3ft section is excavated outside the wall area to facilitate the wall assembly, X-Braces™, plumbing, and concrete footer.

3

### WALL ASSEMBLY

The pool walls are assembled on the perimeter. The X-Braces™ are attached every 4ft, plumbing roughed in, and the footer is poured. At this time Fox Stairs, Buddy Seats®, Swim-Outs, and all integral parts of your Fox pool wall system are added.

4

### BACKFILL

Backfilling can be poured if desired, but is not necessary as the X-Braces™ are designed to support the pool walls independently, even when filled with water. In most cases, your Fox dealer will backfill your pool walls and pour the deck, prior to finishing the bottom and installing the liner.



# EXPERIENCE

## WE GUARANTEE,

Superior customer service, design expertise, and generous hospitality provided at every step of your pool build.

5

### CONCRETE DECKING

Steel reinforcing rods are added throughout the perimeter of the pool attached to the X-Braces™, to form the foundation for your pool deck. Concrete is poured into forms and finished to your specifications.

6

### FINISHING THE BOTTOM

Your Fox Dealer will finish the pool bottom with a mixture of concrete and sand or vermiculite. This material is applied approximately 1.5 to 2 inches thick over the bottom and is troweled smooth by hand.

7

### INSTALLING THE LINER

As soon as the bottom is finished, a vinyl liner is spread across the pool and dropped into place. The top edge of the liner hooks neatly into the Foxite II coping while the remainder is drawn tight around the pool sides and bottom with a vacuum. Once a foot or so of water is in the pool, your Fox Dealer attaches the fittings and cuts away the excess liner material from around the stairs.

8

### ENJOY YOUR NEW POOL!

Once water has been delivered and your pool is full, your Dealer will test all of the components, add sanitizers as necessary, and review their operations with you.

#### PLEASE NOTE:

Fox Pool is partnered with 5 liner manufacturers to ensure the highest-quality liners are being installed.

# OUR SYSTEMS

## X-BRACE™

### X-BRACE CONSTRUCTION SYSTEM PROVIDES A POOL THAT IS SELF-SUPPORTING, WITH OR WITHOUT WATER.

We utilize some of the same technology used in building bridges, tall buildings, water towers and other structures that require durability & strength against high stress.

Your swimming pool holds thousands of gallons of water while holding back thousands of pounds of earth. In order to ensure structural integrity over many years, it is important that your pool walls will remain intact, regardless of the external forces. With X-Brace™ technology, you get just that. Patented by Fox Pool, the X-Brace™ structure provides 100% support for your pool walls and pool deck without concern for internal and external pressures.

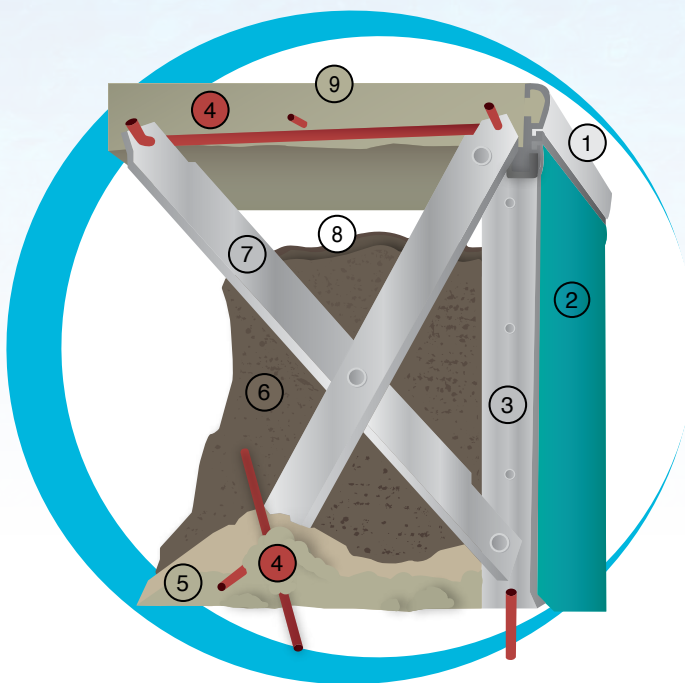
*Patented by Fox and perfected over the years, the Time Tested Engineering principle has been authenticated in an exclusive Engineering Report, prepared by an independent engineering firm, proving the Fox X-Brace™ structural integrity is as we claim.*

### X-BRACE DETAILS

- Pool panels are supported every 2 feet by welded-on Z Bar stiffeners.
- The X-Braces™ are bolted to panels using heavy duty corrosion resistant bolts.
- Steel rods and "S" hooks anchor the X-Braces™ and the pool wall to the ground.
- A concrete footer or foundation is poured around the perimeter of the pool, creating a permanent "foundation."
- Pool can be backfilled with or without water.
- Reinforcing rod is added to connect the top of the X-Braces™ to the deck structure.
- The concrete deck encapsulates the X-Braces™ and reinforcing rod to form a unitary structure.
- Backfill settles over time, forming a thermal barrier between the deck and the ground to protect against frost upheaval.

1. FOXITE Coping
2. Vinyl Liner
3. Wall Panel FOXGARD Protected
4. 3/8" Steel Rods

5. Concrete
6. Settled Backfill
7. Steel X-BRACE
8. Thermal Barrier
9. Walkway



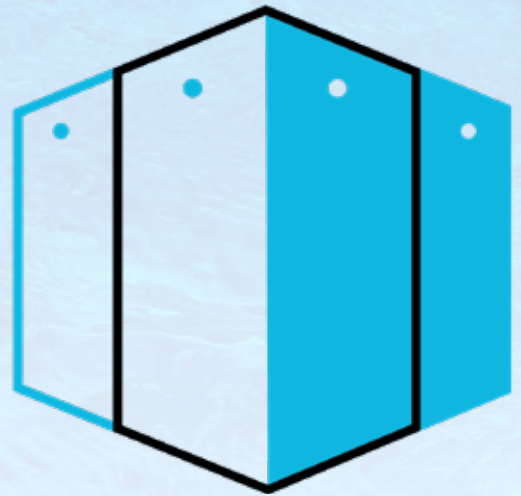
# CLEARGARD™

## GIVE YOUR POOL A LIFETIME PROTECTION WITH CLEARGARD CORROSION RESISTANT STEEL

**Cleargard™** is comprised of a calculated mixture of Aluminum, Zinc, and Magnesium which forms together to provide the most effective non-corrosive and scratch resistant coating for steel parts in the industry.

Al and Mg in the coating layer combine to form a fine, tightly adhered zinc-based protective film on the steel surface as time passes. This protection suppresses corrosion of the Cleargard coating.

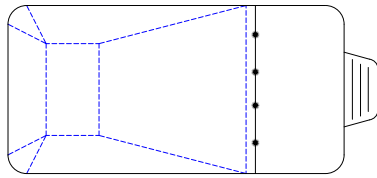
**Cleargard™** offers superior protection against corrosion on Salt Generator Pools, up to 5x's more effective than standard galvanization. It also offers increased protection when servicing areas with a high water table or acidic ground conditions.



### BENEFITS

- Zn, Al and Mg combines to form a firm coating layer. This unique coating develops thin film byproducts that are remarkably corrosion resistant—even over cut edges.
- ClearGard's corrosion resistance reduces coating thickness which benefits the environment. Specifically, decreasing the amount of minerals mined from the earth, reducing harmful runoff.
- When the ClearGard coating layer is exposed to run-off water, Zn and Mg flow over the cut edge. These elements form a fine zinc-based protective film that helps ensure a long product life even against harsh elements.





**RECTANGLE**

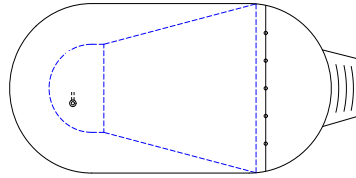
*2' cut corners*

16 x 32 18 x 36  
16 x 34 20 x 40

**RECTANGLE**

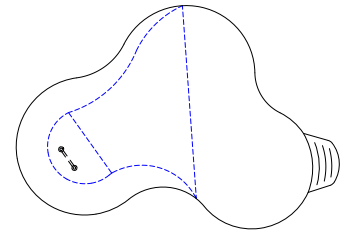
*2' radius corners*

16 x 32 18 x 36  
16 x 34 20 x 40



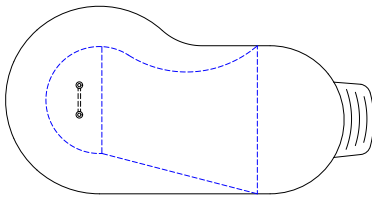
**OVAL**

17 x 33  
18 x 38  
20 x 40



**LAKEFRONT**

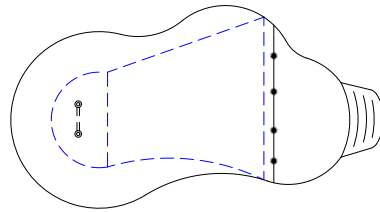
20 x 34  
22 x 36  
27 x 40



**KIDNEY**

*standard and reverse*

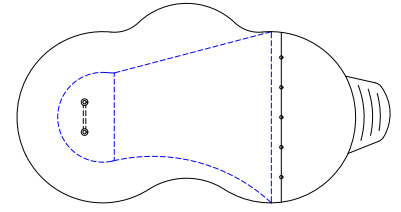
15 x 27 22 x 37  
17 x 29 25 x 42  
19 x 34



**LAGOON**

*left and right*

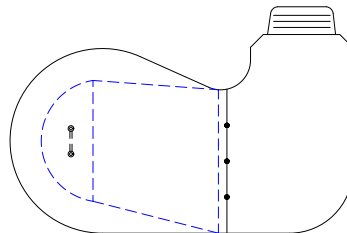
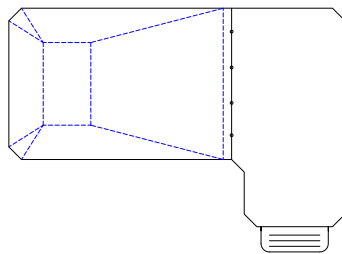
18 x 29 22 x 40  
20 x 34 27 x 40  
22 x 36



**BAYSIDE**

*left and right*

20 x 34  
22 x 36  
27 x 40



**CONTEMPORARY**

26 x 40 90L - *left and right* | 23 x 40 Niagara - *left and right* | 22 x 36 Crescent - *left and right*

**RECTANGLE**

*with plastic corner stair*

12 x 24 16 x 34  
14 x 30 18 x 36  
16 x 32 20 x 40

**RECTANGLE**

*with 6' Sundeck and full-width poured stair*

12 x 24 16 x 34  
14 x 30 18 x 36  
16 x 32 20 x 40

**RECTANGLE**

*with full-width poured stair*

12 x 24 16 x 34  
14 x 30 18 x 36  
16 x 32 20 x 40

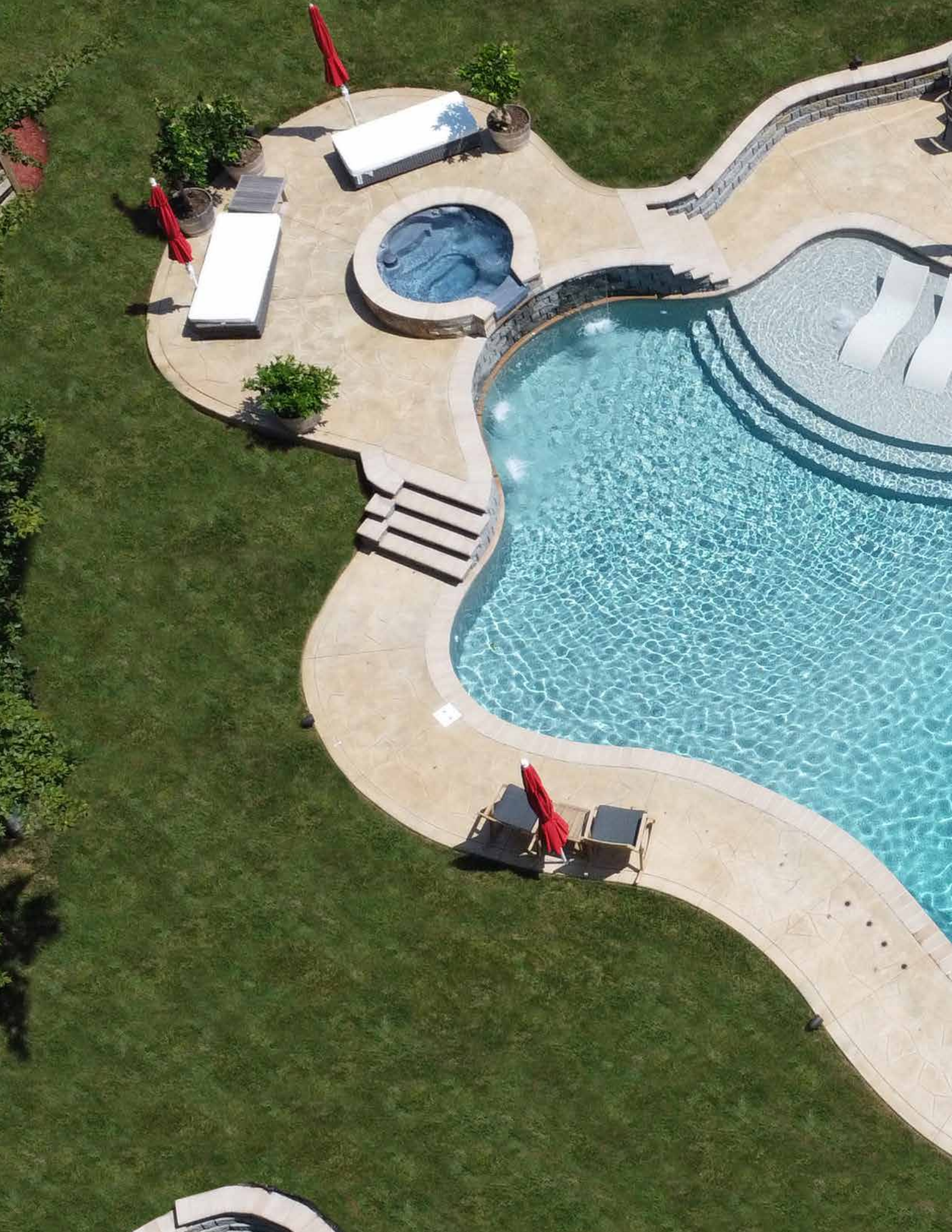


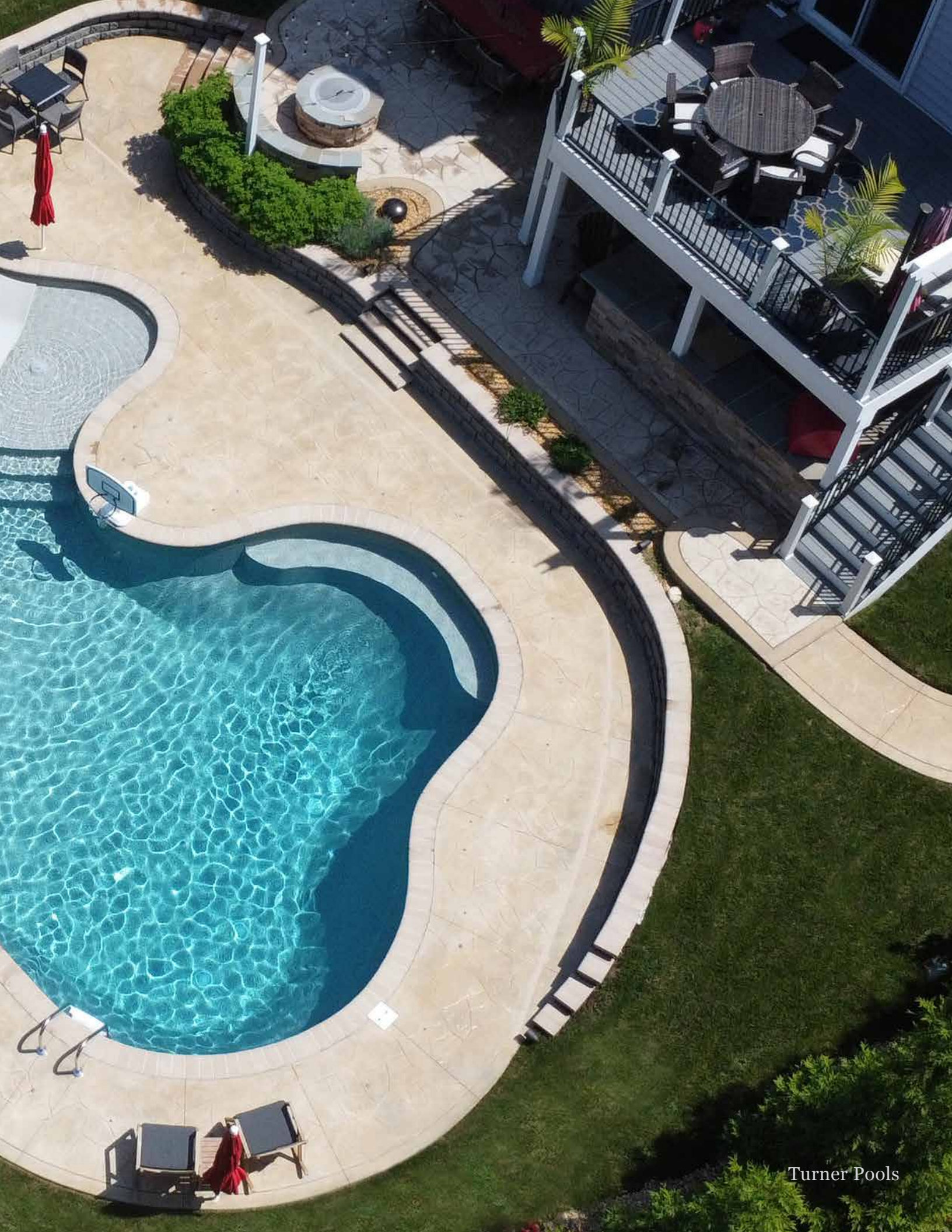
# Custom

## SHAPES

***For Fox, no dream is too big.*** Elegance and variety are central to Fox Pool's custom-designed swimming pools. Gracefully sweeping curves can lend organic, visual movement to your landscape. They are as affordable as they are beautiful, thanks to the strength and economy of modular panel construction and vinyl liner interiors. Do you need separate areas so multi-generations can have their own space? Create a shallow space for children and sunbathers and another for the more vigorous fun of slides and games.









Fox Pool



Thornbury



Fox of Central OK



Sparklynn Pools



Fox of Spartanburg



Jackson Pools



Fox Pool

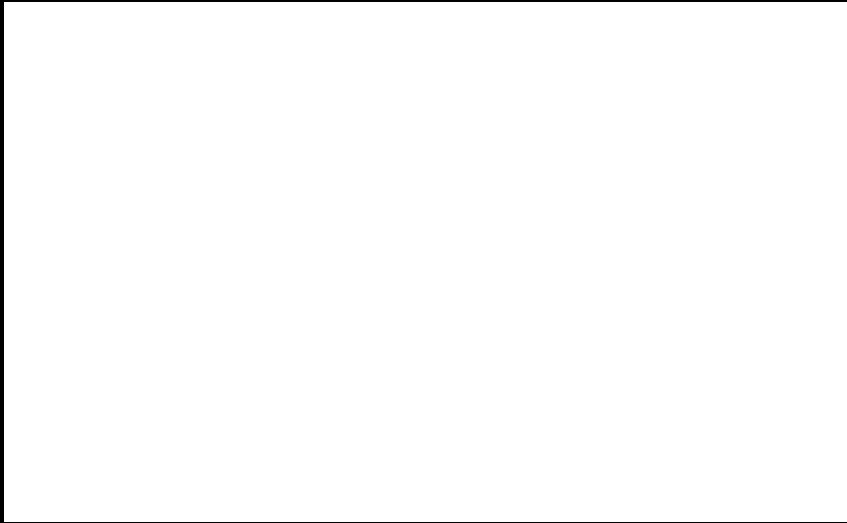


Aquarius



*The Strongest Name in Pools.*

AUTHORIZED FOX POOL DEALER



250 ROUTE 61 S, SCHUYLKILL HAVEN, PA 17972  
717.801.1345

**FOXPOOL.COM**

Made in the USA • FX-INGROUNDPOOL © 2026